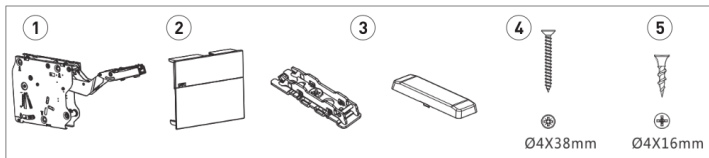


EN USER'S GUIDE

Top-stays



Set includes:

1. 1x lift mechanism set
2. 1x white cover caps set
3. 2x front panel fixing with a cover
4. 6x screws for wood Ø 4x38mm
5. 4x screws for wood Ø 4x16mm

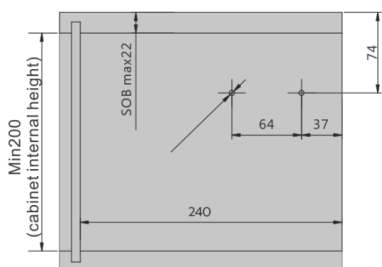
Approximate front height	Power Factor F	Spring power	White	Grey
250-400 mm	480-1250	low	PD-LIFTNEW-LIGHT-10	PD-LIFTNEW-LIGHT-80
250-500 mm	960-2350	medium	PD-LIFTNEW-MEDIUM-10	PD-LIFTNEW-MEDIUM-80
250-500 mm	1600-3600	strong	PD-LIFTNEW-STRONG-10	PD-LIFTNEW-STRONG-80
600 mm	2500-4500	extra strong	PD-LIFTNEW-STRONG-PLUS-10	PD-LIFTNEW-STRONG-PLUS-80

Power Factor F

F=front height x front weight with doubled handle weight (kg)

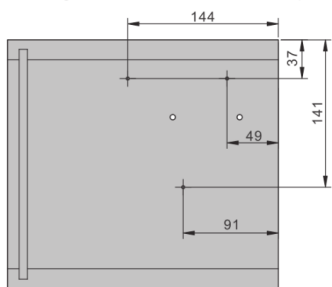
PLANNING:

Cabinet planning information

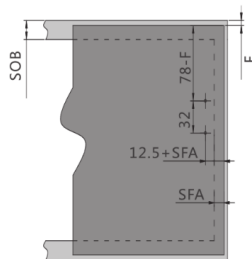


*When using a 240mm cabinet hanger

Mounting dimensions in the cabinet body

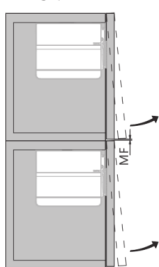


Mounting dimensions in the cabinet front

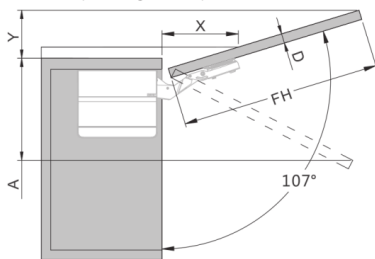


NF - Front overlap
K - Gap

Minimal gap (2 mm)

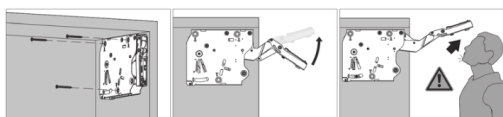


Cabinet planning with top cornice



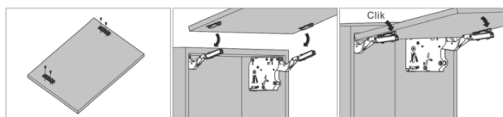
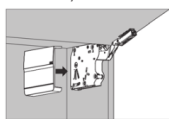
GF (mm)	16	19	22	26	28
X (mm)	70	58	49	35	26
Y (mm)	Y= FH x 0.29 - 15 + D				

Assembly



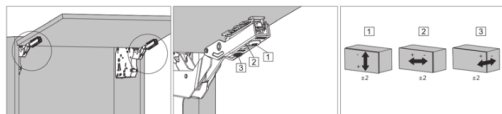
Caution when opening arm
The arm of this device could spring up and cause injury. Do not push the arm down without door attached.

Assembly of the housing



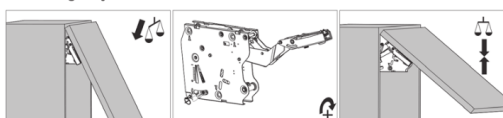
Click

Door Position Adjustment



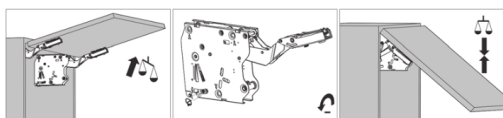
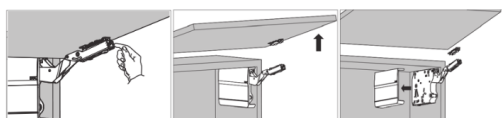
* increasing the opening force (turn adjustment screw counter-clockwise)
** decreasing the opening force (turn adjustment screw clockwise)

Hovering Adjustment



Adjustment

Removal



Adjustment

Opening angle stops 75 and 100° (optional)

